

# Netley Marsh CE Infant School

## Newsletter October 2021

Dear Parents/Carers,

What a busy start to the year, with so many changes! However, it is starting to feel a bit 'normal' again, but as we know, for many of our children the 'old normal' is a bit odd! It has been fantastic to have whole school worship again, be back in church, eating together and to have play times as a school!

As we approach Christmas (yes, I did say that word!) the pace of learning will continue to move forward and the teachers across the Federation have been working together to plan an exciting curriculum for next half term!

### **Covid**

I'm afraid I can't let a newsletter pass by without a mention of covid. Although things seem to be returning back to normal slowly, we are also very aware that covid still remains with us. Thank you to everyone who has informed us when your child has tested positive, as this has helped us take any action needed, quickly - including increasing the frequency of staff testing. Please remember, should you or your child show any covid symptom, please seek a PCR test. For those who are double vaccinated, you are able to carry on as 'normal' should a member of your household test positive, but please remember, that if you test positive on a LFT test, you will need to have a PCR test. We are also urging everyone to work as hard as possible to get your child into school, as children under 18 are also permitted to carry on as normal, should a household member test positive.

### **Volunteers**

We are hoping to begin to have volunteers back in school after half term. There are a series of safeguarding talks we are asking all potential regular volunteers to come to (dates of which can be found on our [website](#)). You can attend any talk at any one of our schools within the Federation. Even if you are considering volunteering towards the end of the year, my advice would be to come now for a talk, to hear important key messages. If you are only considering helping on trips, these meetings are not as essential, as the main key messages would always be discussed as part of the trip briefing.

Cont....

### **Inside this issue**

Letter from Mr Bowen including:

- Covid update
- Volunteers
- Tapestry
- Clubs
- Prayer
- ⇒ Rotary Club Treasure appeal
- ⇒ Morrisons Good to Grow
- ⇒ Library Books
- ⇒ Absence Notification
- ⇒ Dogs on site
- ⇒ HC35 menu
- ⇒ Poppy Appeal
- ⇒ Data Collection
- ⇒ School Events this half term
- ⇒ Heritage Centre Events
- ⇒ Dates for your diary

## **Tapestry**

Over the pandemic, we have used tapestry as a platform for sending home tasks and work for those not in school. If your child is isolating, but well enough to work, please do let the admin team know, as we will then ensure that home learning is set on tapestry, to try and keep your child's progress moving forward. We have been exploring how we plan to use tapestry and you will hopefully have been receiving updates on tapestry over the past few weeks. If not, it may be that there is an issue with your account – if so, please speak with the admin team and we will try and rectify this as soon as possible.

## **Clubs**

A letter will be coming out soon – if not already, regarding sports club for the next half term. For sign up you will need to visit [Team Spirit's website](#)

## **Prayer**

We have talked in worship recently about our value of respect. We have thought about how by saying thank you, we are showing respect to others.

Thank you Lord, thank you,  
for the wonder of life  
as you made it.  
Thank you Lord, thank you,  
for the beauty of love  
as you show it.  
Thank you Lord, thank you,  
for the glory of presence  
as you reveal it.  
Thank you Lord,  
for all that is,  
for all that was,  
for all that will be  
of your creating.





In the past, families from Netley Marsh Infant School have very kindly supported Honey Pot and the Rotary Club's Christmas shoe box appeal.

Last year, due to COVID, instead of distributing presents and shoe boxes to the young carers, Honey Pot produced an activity annual, which was so popular that they have decided to continue with this.

Honey Pot has therefore asked the Rotary Club to help by collecting 'Treasure', (small gifts and toys) to use throughout the year in the memory bags that they give to each child at the end of a respite break.

Please see the flyer for details of the appeal, and if you would like to donate, please ensure that items are in school by Friday 26th November, after which they will be collected by the Rotary Club.



## Treasure for young carers



Thank you for helping Honey Pot build brighter futures and create happy childhood memories for young carers age 5-12 by donating rewards and prizes.



We fill their memory bags with small toys and treats to take home after a Honey Pot respite break to help them smile when they are working hard to care for someone they love.



### Small Toys/gifts

**Yes please:** Small games/cards, small lego sets, small toys, slime, kinetic sand, nice keyrings, small soft toys; packs of sweets, hair accessories/slides.

**No thank you:** McDonalds toys, loose figures, used toys, large soft toys, individual sweets, toiletries, toothbrushes, shower gel, stationery, books.



Thank You

It would really help Honey Pot if your donations could be sorted into groups of items.

Please contact [viv@honeypot.org.uk](mailto:viv@honeypot.org.uk) with any questions. Thank you.



## Morrison's It's Good to Grow scheme

We have registered our school with Morrison's 'It's good to Grow' scheme so if you shop at Morrison's please register to donate your vouchers to us!! Every £10 you spend in store equates to one grow token which we can redeem for gardening equipment!



Thank you.

Also a big thank you to Morrison's for providing 2 of our October half term free school meal £15 vouchers for free!

## School Library

The school library service visited on Thursday 21st October with a delivery of lovely new fiction books for our library.



Children can take out 2 library books and keep them for **up to 2 weeks, after which they must be returned to school**. This means that your child gets to take home lots of different books, and also helps us keep track of our stock. Every year we lose dozens of books, so your help in returning them on time would be much appreciated.

## Absence Notification

If your child is off sick, you can advise us by **Parentmail** or by calling the school and leaving a message. Please can we ask that this is done by 9.30am.

Please use these methods rather than emailing a member of staff, as they can be accessed by whoever is working in the office.





Much as we love them, due to health and safety guidance from the local authority, we can not allow your dogs on the school site.

If you would like to walk your dog to school, they can be tied up securely outside, at your own risk. If your dog is too young to be tied up and you are able to carry it safely, this is permitted.



Our award-winning caterer, HC3S have published their new primary school menu that starts after the half term break. To view the new menu and download the new three-week cycle menu resources, visit their website.

[Primary school menu | Hampshire County Council \(hants.gov.uk\)](#)

The menu is also on our school website:

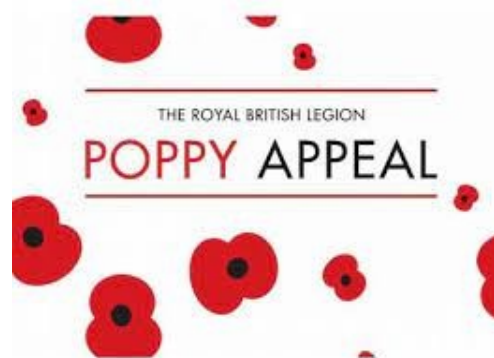
[School Meals – Netley Marsh CE Infant School \(oakscelearningfederation.co.uk\)](#)

where you will also find our jacket Potato menu, which starts after half term.

## Remembrance day

After half term we will once again be supporting the Royal British Poppy Appeal. They will be providing us with a variety of items to sell, including poppies, wristbands, snap bands, reflectors, zip pulls and sharpeners. Suggested donations range from 50p to £1.50.

We will advise at the start of term where and how we will arrange this.



## Data collection form reminder



We recently send home Data Collection Forms for you to check that we have all your details up to date. If you have any changes, please mark them on the form and return it to school. If you do not return the form, we will assume that your details are correct.

Please note that we are unfortunately only able to record **one** method of transport on the Travel Arrangements section.

## Harvest

This half term has seen lots of lovely activities at school to celebrate Harvest.

Thank you to all the families who attended the Harvest Service, and for the wonderful donations to the Society of St James.



The Quails class have been learning the story of the Little Red Hen, and practising re-telling it. They then made their own bread and enjoyed a delicious harvest breakfast in the school hall which they shared with their families.

HC3S provided a harvest lunch, and baked this magnificent harvest loaf which all the children were able to share.



Morrisons Community team came to visit Quails class. They brought lots of seasonal fruit and veg and bread, which the children were able to touch and smell and taste.



## Netley Marsh Scarecrow Festival

Netley Marsh Parish Council have organised a scarecrow festival, which runs from 23rd to 30th October. The Quails class have entered a brilliant scarecrow, which is on display in the sandpit in their outside area.

The judges will be coming round over the holidays and are very excited to come and look at the scarecrows. There will be certificates for all entrants and prizes for the top two scarecrows. They will update their website with a list of winners next week.

As they have only had a few entries, they have decided not to design a map, but they will put a list of addresses on their website, if families want to go round and have a look: [Netley Marsh – Parish Council \(netleymarsh-pc.gov.uk\)](http://netleymarsh-pc.gov.uk)



## Author visit



The children loved the visit from local author Liam White, who shared his latest book, *The Collie and the Cat*, and he signed books for us!

## Children in Need

Year 2 are selling merchandise, including ears and badges, as part of our Christian Aid global neighbours award. After half term they will be planning their selling strategy so please support them and this good cause ahead of Nov 19th.



## Rev'd John's Marathon Challenge



We had wonderful support to help Rev'd John complete one of his 8 marathons. On a lovely sunny morning, families helped to walk, run and jump 44 miles round the field!

It was so successful that many people returned to repeat the experience with a Well-being Welly Walk, where many miles were covered again.



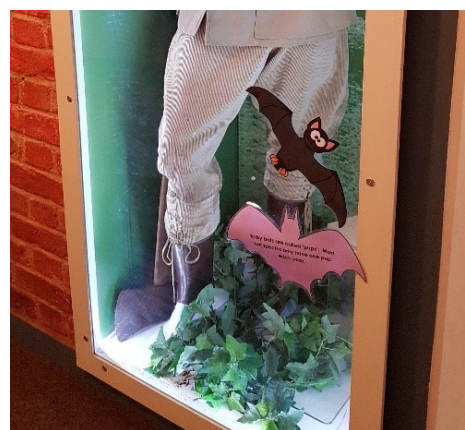
# New Forest Heritage Centre

## Half Term Holiday Fun at the New Forest Heritage Centre, Lyndhurst

If you're looking for children's activities this half-term then look no further!

Since the season is awash with all things pumpkin related, we have decided to take a 'batty' approach to our half term activities. The New Forest is home to approximately 14 out of the 18 species of bat resident in the UK. Our bat trail around the museum will shed a little more light on this misunderstood creature.

If making and creating is what you are looking for, then why not pop in on Tuesday 26<sup>th</sup> October or Thursday 28<sup>th</sup> October for our drop-in craft activities? A variety of bat themed activities are on offer including masks, badges and finger puppets to name just a few. So, there should be something to inspire and entertain all our younger visitors.



**Half Term Museum Trail:** Free.

Available during opening hours (collect your trail sheet from the ground floor gallery or from reception)

**Half Term 'Drop-in' Craft Activities:** Free.

Tuesday 26<sup>th</sup> October, 10.30 – 12.30

Thursday 28<sup>th</sup> October, 10.30 – 12.30 and 13.30 – 15.30

Please note places are limited and children must be accompanied by an adult.

Field Studies Room and Jack Hargreaves

Seminar Room

(First Floor. Accessible via lift)



We're looking forward to welcoming you!



# DATES FOR YOUR DIARY

<b>Thursday 21st October</b>	<b>Last day of this term for pupils</b>
<b>Friday 22nd October</b>	<b>INSET day—school closed to pupils</b>
<b>Monday 1st November</b>	<b>First Day of term</b>
Tuesday 2nd November 9am	Volunteers' Safeguarding Briefing at Netley Marsh
Wednesday 3 November	Y1 Hockey Festival at Bartley Junior school. Parents invited to watch 10—11.30
Thursday 4th November	Praizin' Hands puppet show for children in school
Thursday 4th November 9am	Volunteers' 'Safeguarding Briefing at St Michael and All Angels
Friday 5th November	Y2 Hockey Festival at Bartley Junior school. Parents invited to watch 10—11.30
Monday 8th November 9-12 3.30-6	YR Parent consultations in school Y1 consultations on-line
Tuesday 9th November 9-12 3.30-6	Y1 Parent consultations in school Y2 consultations on-line
Wednesday 10th November 9-12 3.30-6	Y2 Parent consultations in school YR consultations on-line
Thursday 11th November	Remembrance Day
Friday 12 November 2.30pm	Book Celebration—Parents in to look at children's books
<b>Monday 15th November</b>	<b>INSET day—school closed to pupils</b>
Friday 19th November 3.30-4.30	FNMSA Children in Need Disco. Children to wear spots and ears to school
Thursday 25th November 2-3pm	Totton and Eling Lantern Parade workshops in school
Friday 26th November	Y1 at Testwood Lakes
Friday 3rd Dec	Virtual author visit for children
Friday 10th December	Christmas Dinner and Christmas Jumper Day
Saturday 11th December 2-4pm	FNMSA Christmas Fayre, Church Hall
Wednesday 15th December	Provisional date for Christmas Service
<b>Friday 17th December</b>	<b>Last day of term</b>
<b>Tuesday 4th January</b>	<b>First day of Spring Term</b>

## Inset days remaining 2021—22

Friday 22nd Oct 2021;    Monday 15th Nov 2021;    Thursday 21st July 2022